

www.easyLogix.de

Software Development

Plug-In PCB-Investigator:

„Net Length“ calculates lengths
of all nets

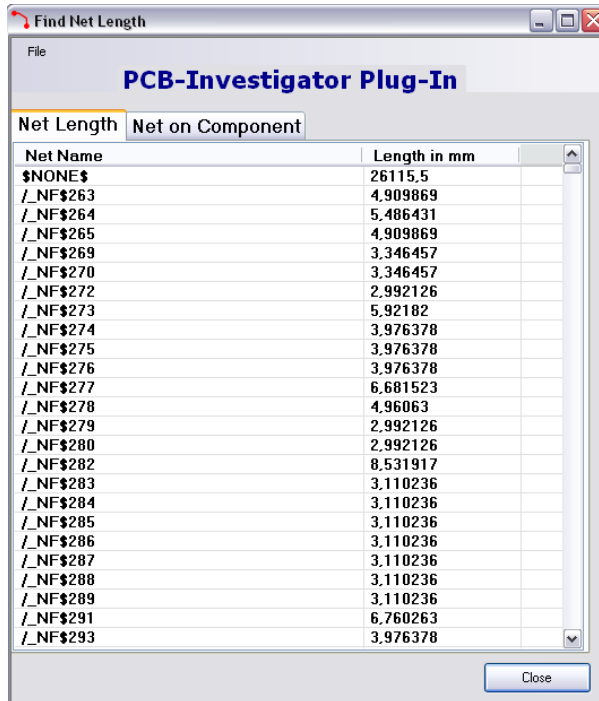
Schindler & Schill GmbH

Bruderwöhrdstraße 15b
93055 Regensburg
Deutschland

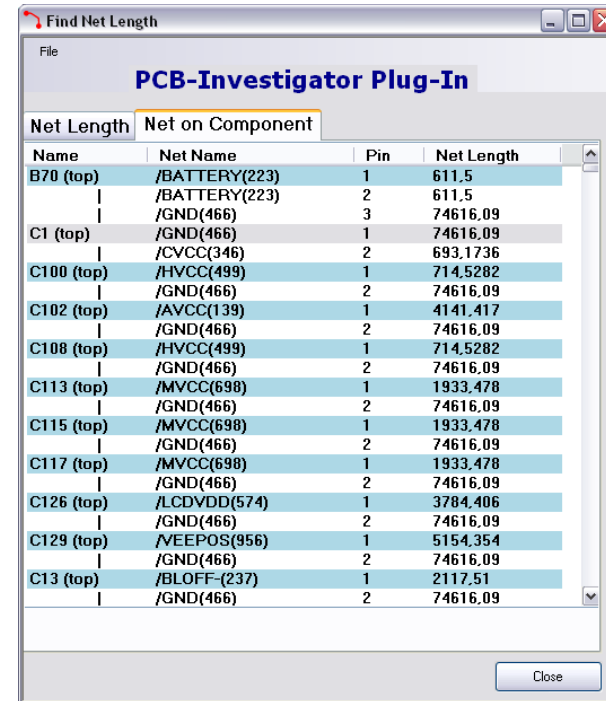
Tel: +49 941 604889719
Email: info@easyLogix.de
Web: www.easyLogix.de

Net Length Plug-In

After installing the Plug-In you get the new menu item  Net Length .



Display for the nets and their lengths



Display for all nets which are connected to a certain component.

Net Length Plug-In

„Net Length“ calculates the lengths of all nets of a printed circuit board with the following presettings:

- Lines are added up
- Surfaces are not taken into account
- Intersections are plurally counted