

www.easyLogix.de

Software Development

Plug-In PCB-Investigator:

„Graphic Board Compare“ shows differences between two process steps of one job by comparing the board graphically.

Schindler & Schill GmbH

Bruderwöhrdstraße 15b
93055 Regensburg
Deutschland

Tel: +49 941 604889719
Email: info@easyLogix.de
Web: www.easyLogix.de

GraphicBoardCompare Plug-In

After installing the Plug-In you get a new menu item  .

Load the two Jobs

Click Compare to select the layers

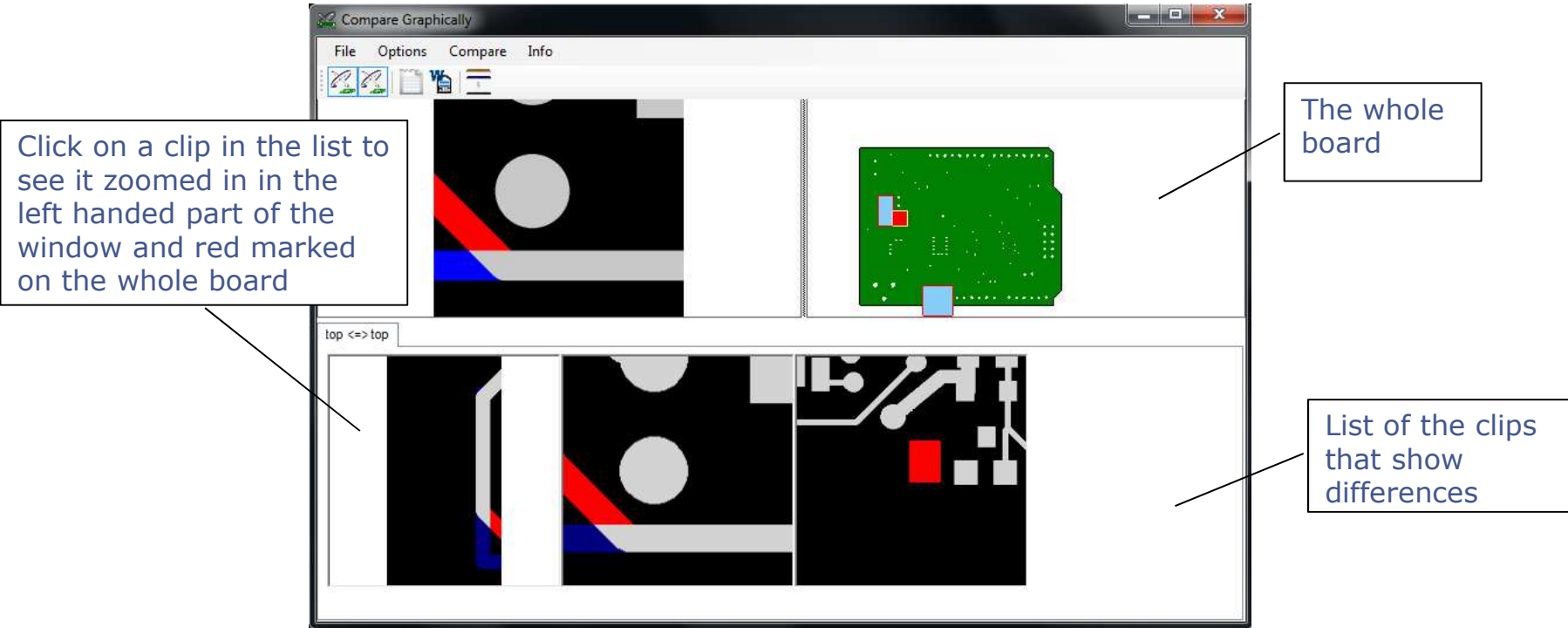
Your Options:

Options

- Show PCB-Investigators
- Show Drills
- Show Info
- Activate Layer
- Deactivate Other Layers
- Tolerance 5 μm

Start the comparison

GraphicBoardCompare Plug-In



GraphicBoardCompare Plug-In

- The Graphic Board Compare Plug-In shows differences between two process steps of one job by comparing the board graphically.
- After loading the two jobs you want to compare, select the layers you want to compare. Shortcuts for selecting all layers or all signal layers are available as well.
- In your options you can define
 - if you want to open a new PCBI for both Job1 and Job2 (see slide #4)
 - if you want to see the drills on the whole board visualization
 - if you need the color explanation for the marking
 - if you want to activate a layer in the new PCBIs by clicking on the according clip in the overview and if you want every other layer to be deactivated
 - that differences smaller than 5 μ are excluded from the analysis, since they are not decisive. Like this, you can accelerate the analysis
- The result window shows a list with all parts that have differences, separated into several tabs for the different layers. Above this list you can see the whole board with the differences marked red and the single part zoomed in on the left hand.
- The two new PCBIs show the differences as well; the PCBI for the first job creates a new layer list, that shows only the modified parts.