

# www.easyLogix.de

Software Development

## **Plug-In PCB-Investigator: „Edit component“**

The Plug-In for Electronic change proposals

---

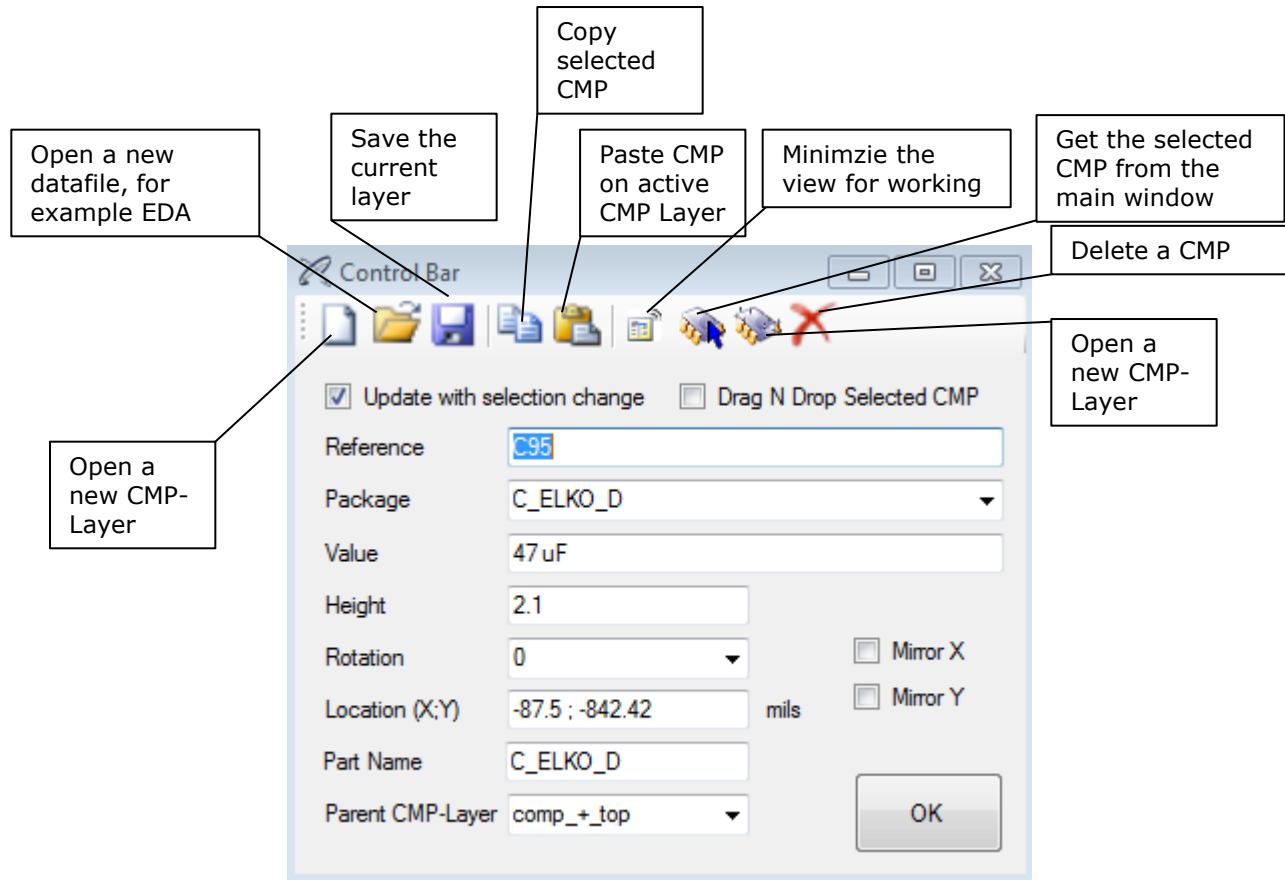
### **Schindler & Schill GmbH**

Bruderwöhrdstraße 15b  
93055 Regensburg  
Deutschland

Tel: +49 941 604889719  
Email: [info@easyLogix.de](mailto:info@easyLogix.de)  
Web: [www.easyLogix.de](http://www.easyLogix.de)

---

# Edit CMP Plug-In



# Edit CMP Plug-In

---

First you should select a component location.

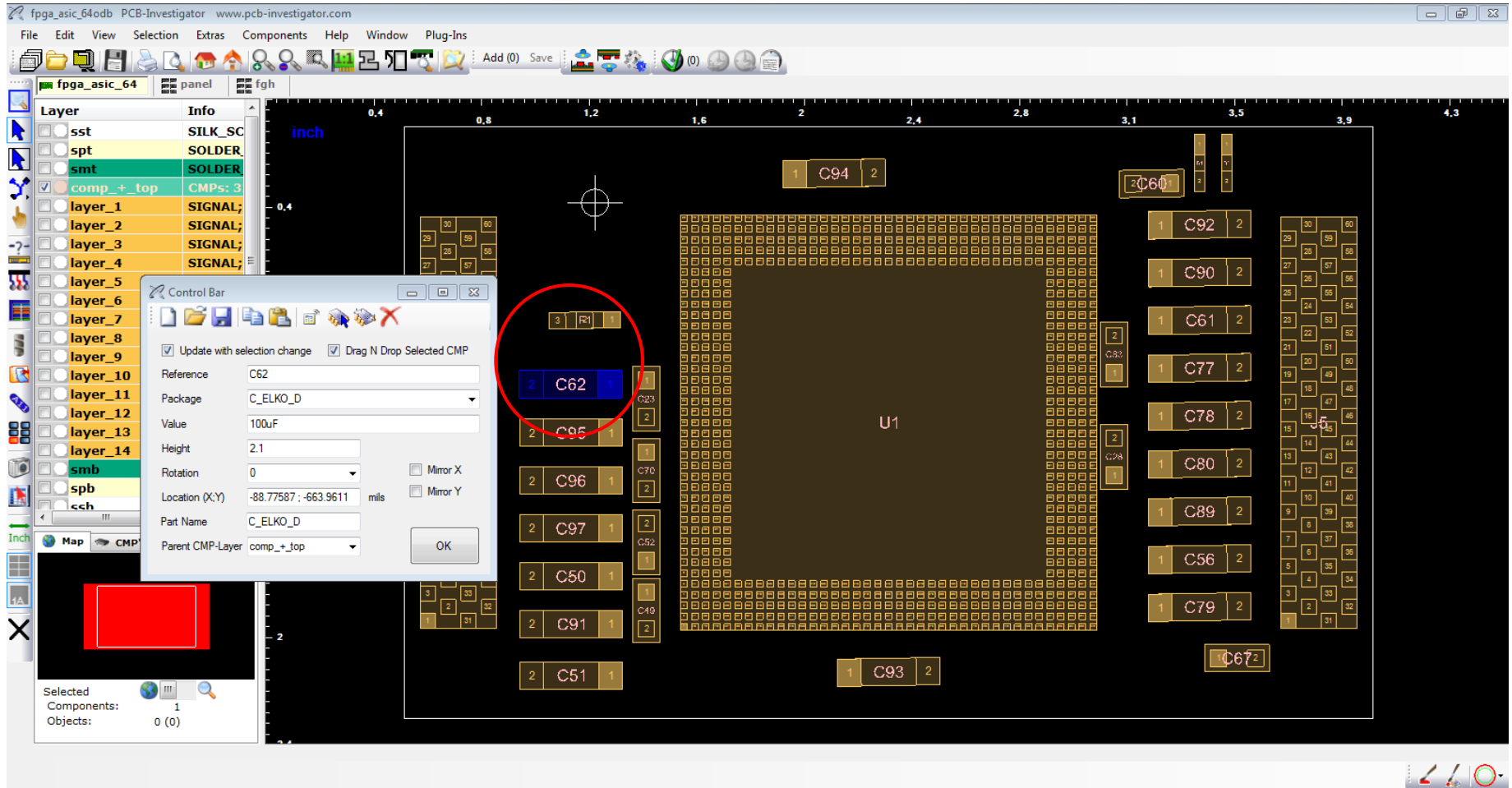
If the button "update with selection change" active, the data available in the "Edit component" dialog is displayed, is this not enabled, no data is displayed.

With the button "drag and drop" you can move simply components by mouse click to another location and this represent your proposed amendment figuratively.

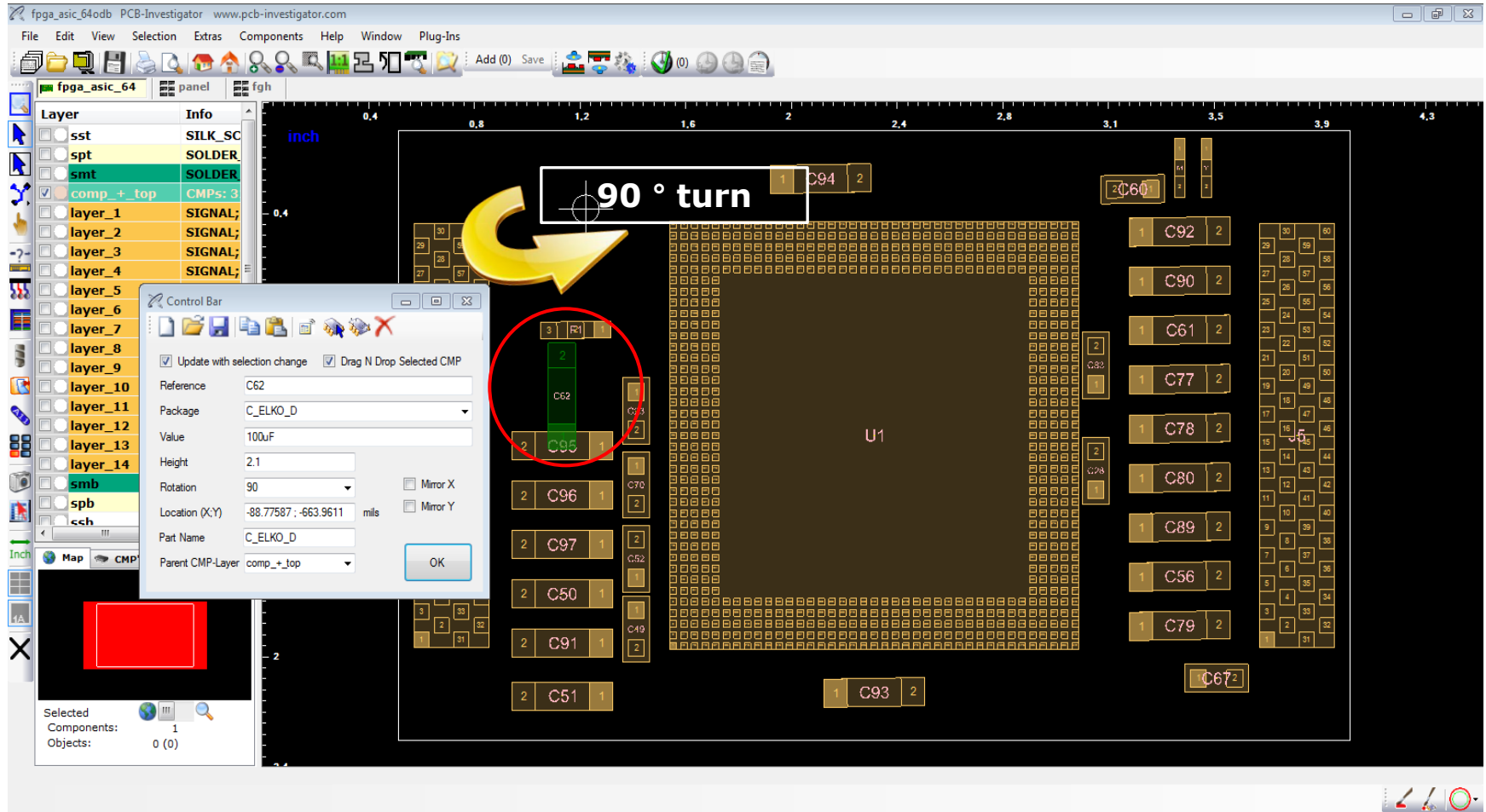
In the shown toolbar, a completely new layer will be created (new Layer CMP) or deleted (delete selected CMP). The currently designed library can be saved and with one click you will reach easily to the previously selected components.

The value, the height, rotation, mirroring or the location can be set manually. With the button "OK" changes to display in the main window.

# Edit CMP Plug-In



# Edit CMP Plug-In



# Edit CMP Plug-In

To move the components with the drag and drop button.

