



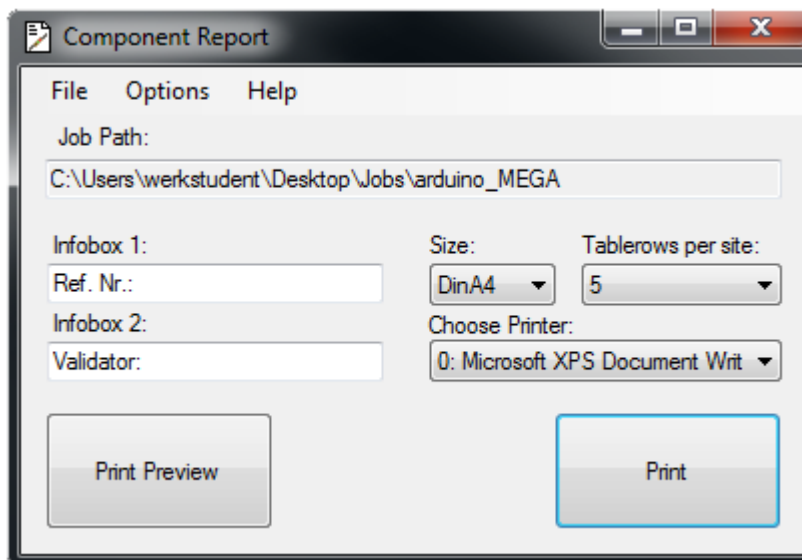
**EASY LOGIX.DE**

# Creating a Component Report

**Schindler & Schill GmbH**  
Bruderwöhrdstr. 15b  
93055 Regensburg  
Deutschland

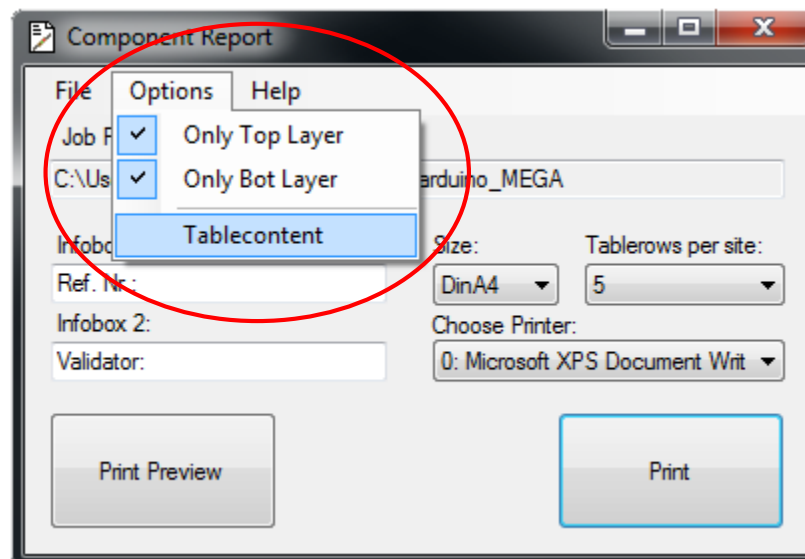
Tel: +49 941 604 889 719  
Email: [info@easyLogix.de](mailto:info@easyLogix.de)  
Web: [www.easyLogix.de](http://www.easyLogix.de)

1. Open a job in PCB-Investigator
2. Open the plug-in „Component Report“



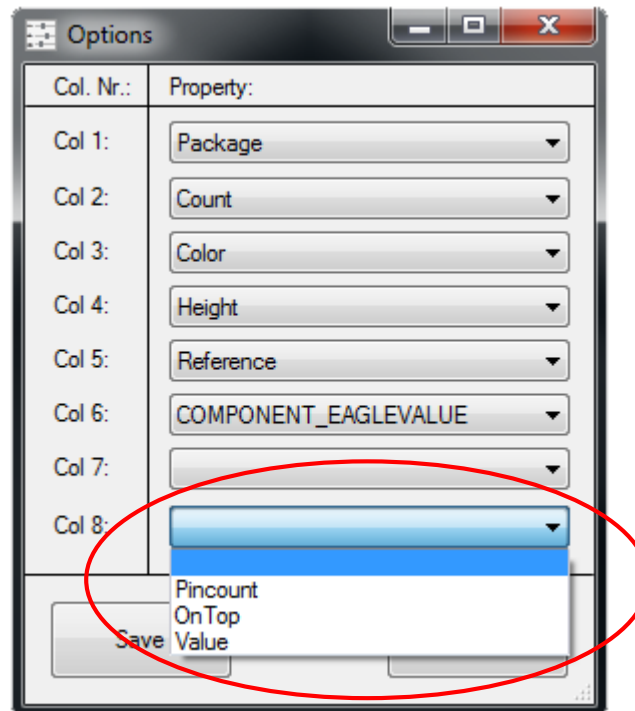
# Perform Options

- Click on „Options“ opens the optionsmenu
- With „Only Top Layer“ and „Only Bot Layer“ limit the number of components
- Click on „Tablecontent“ opens the outputsettings

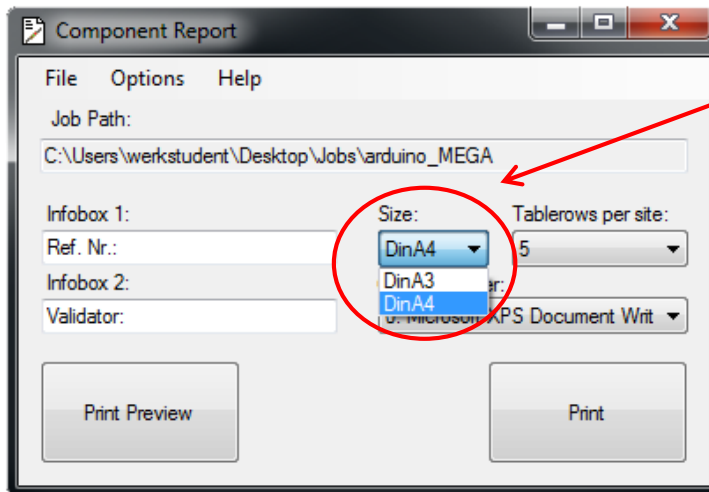


# Optionsmenu

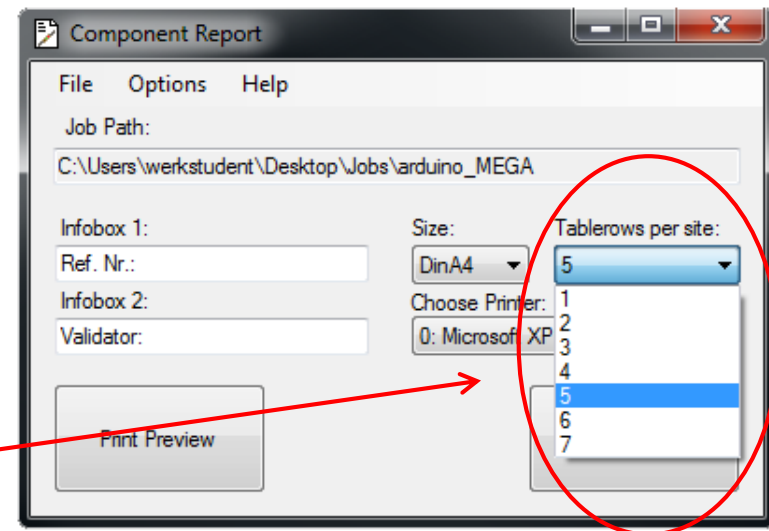
- The first 3 columns are predefined
- The remaining 5 columns are individually adjustable
- Click on „Save“ saves all options



# Output Settings



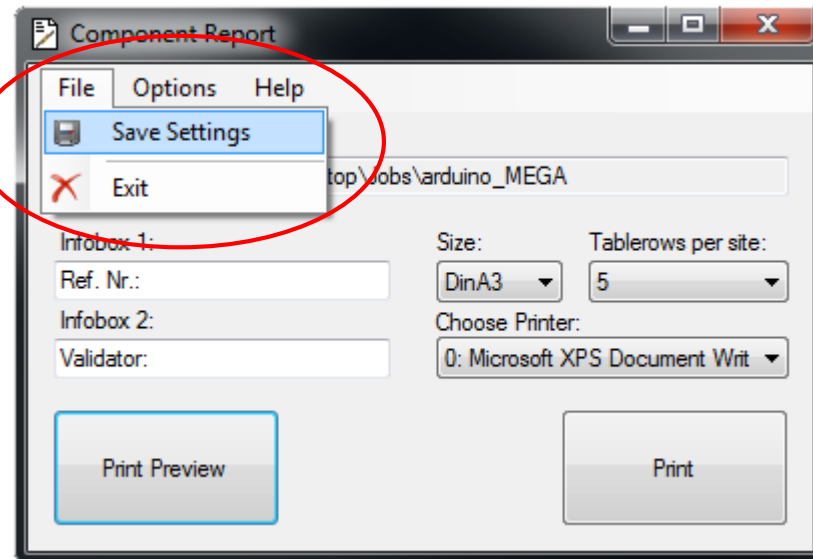
**DinA3 and DinA4 are available as format**



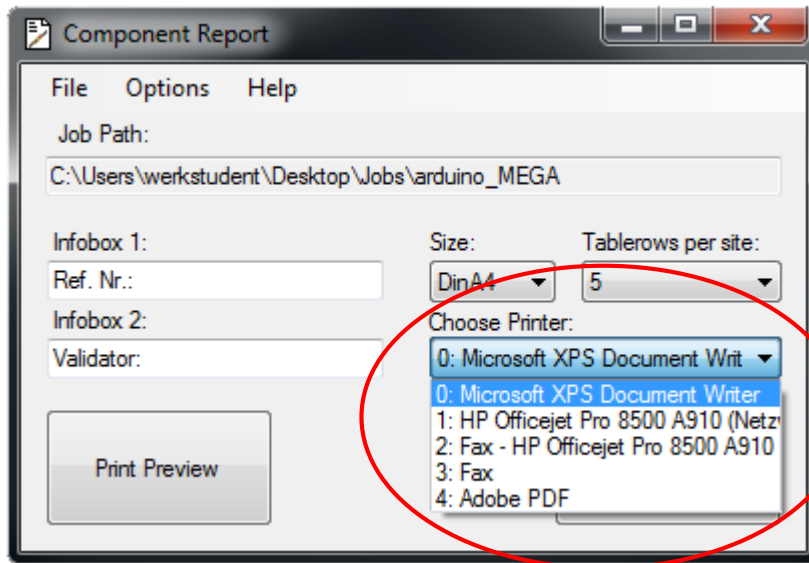
**The number of tablerows varies between 1 and 7**

# Save

**Click on  
„Save Settings“  
saves all options for  
the job**

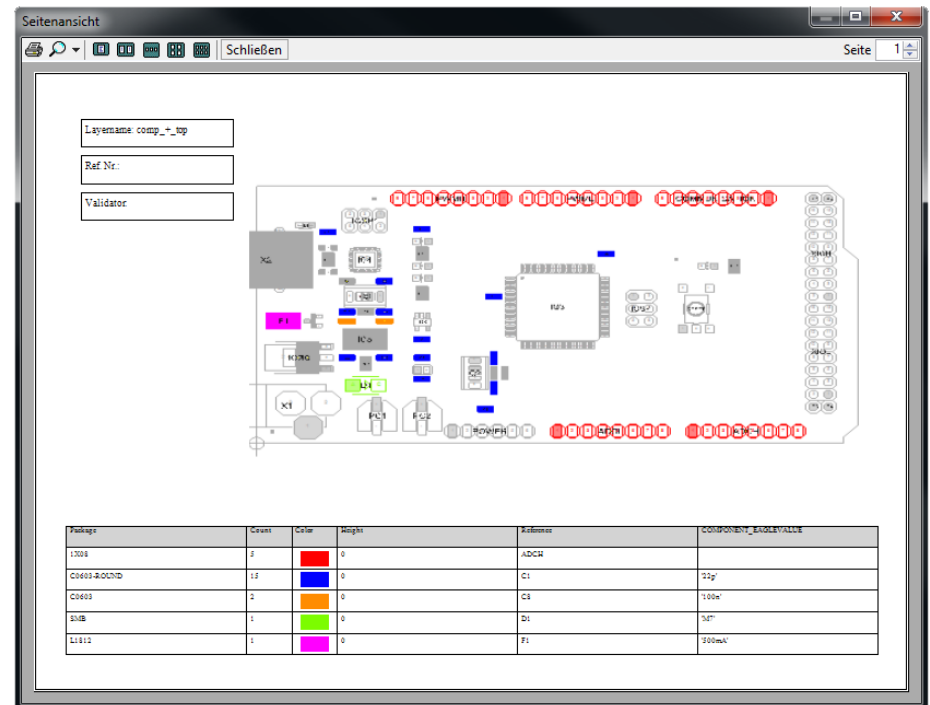
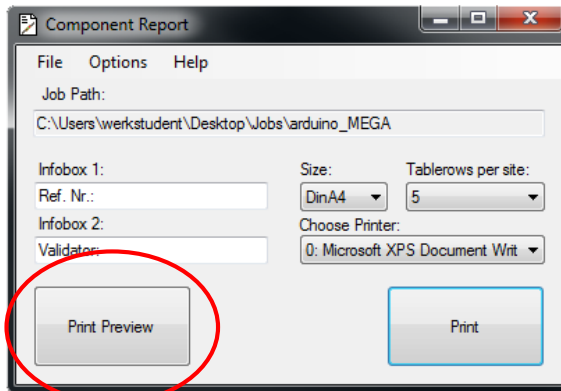


# Printer Settings



**All installed printers  
are available**

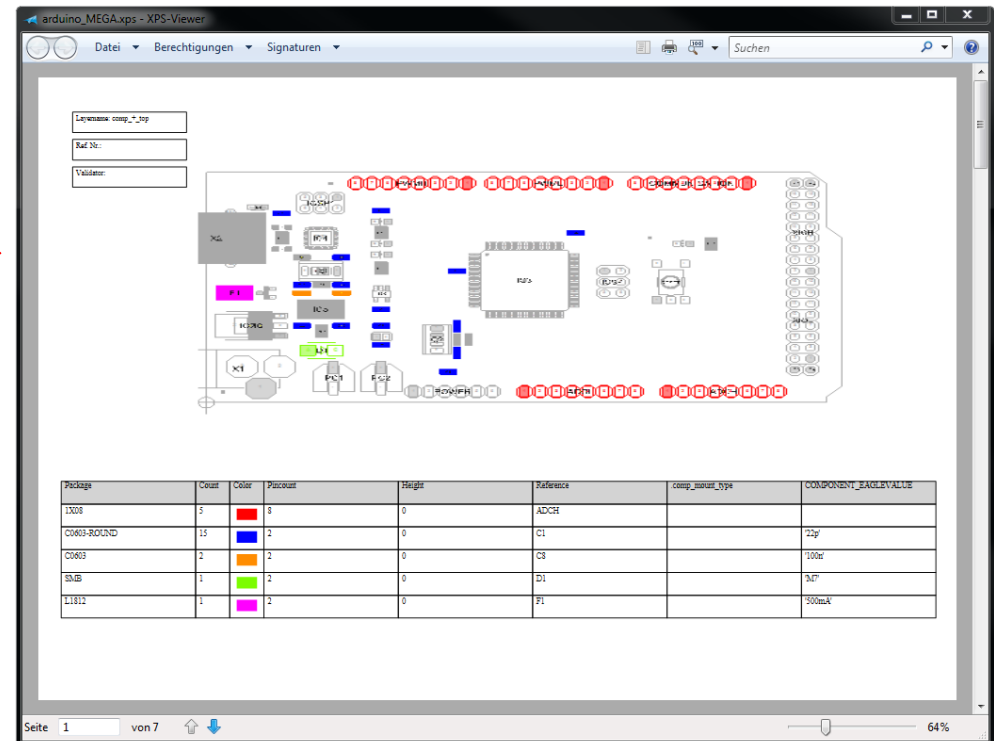
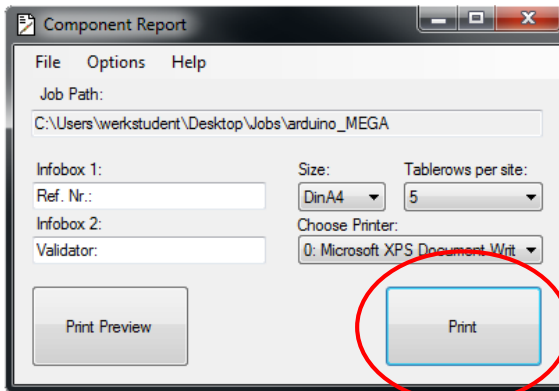
# Print Preview



Click on  
„Print Preview“  
opens the  
print preview



# Printing



Click on „Print “  
prints the report