



EASY LOGIX.DE

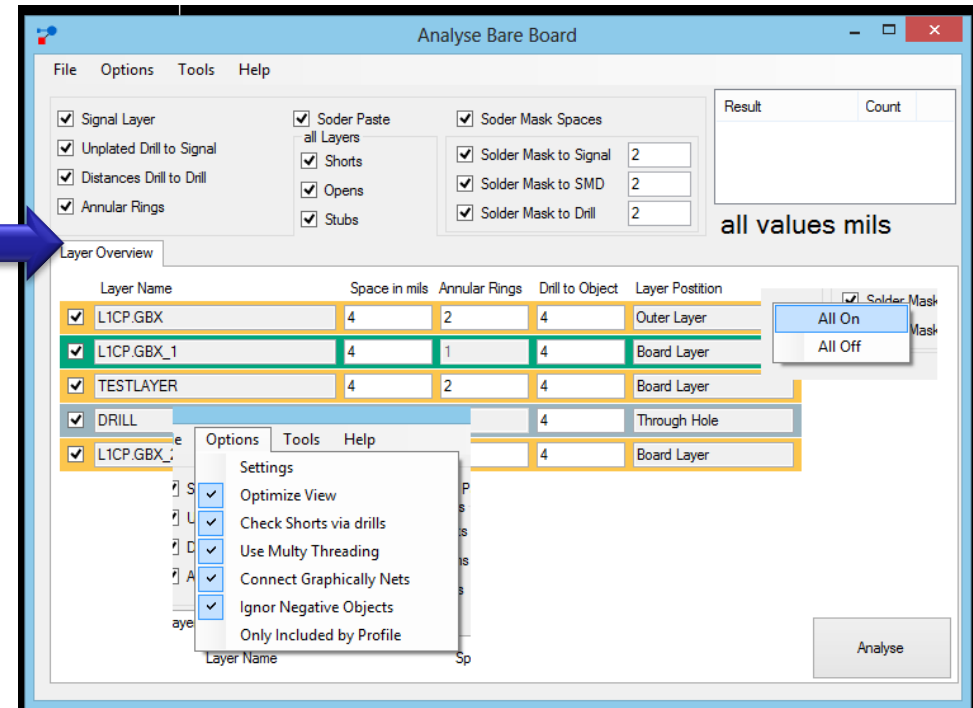
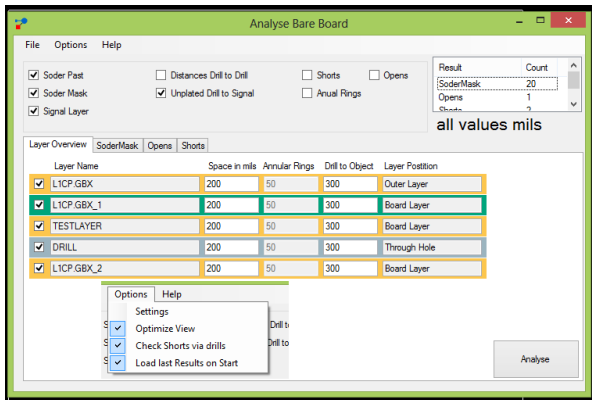
Bare Board Analysis

Schindler & Schill GmbH

Bruderwöhrdstr. 15b
93055 Regensburg
Deutschland

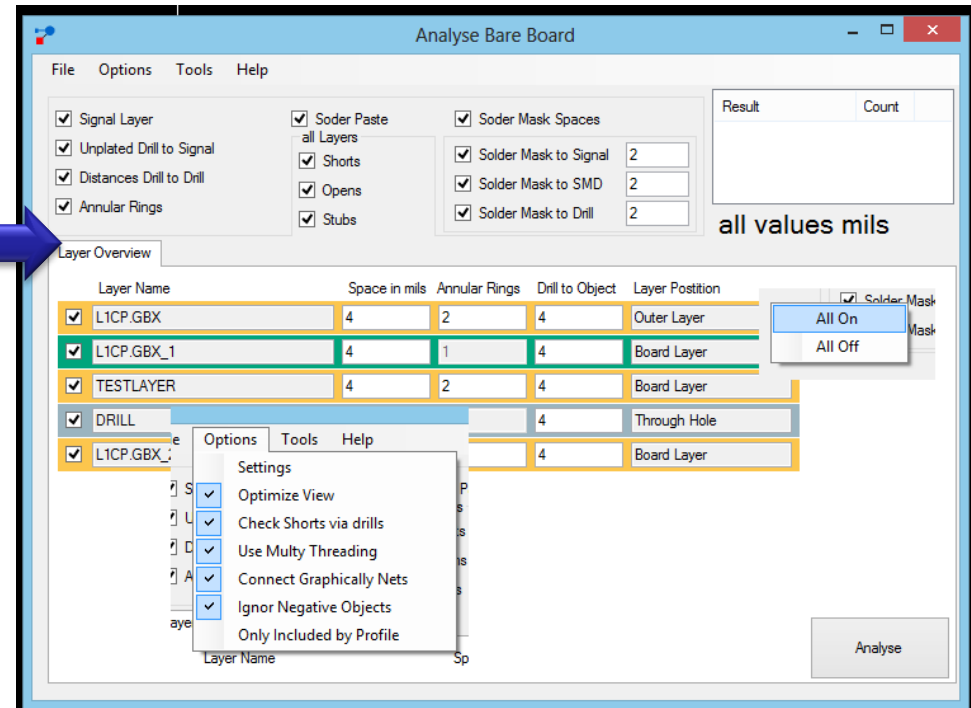
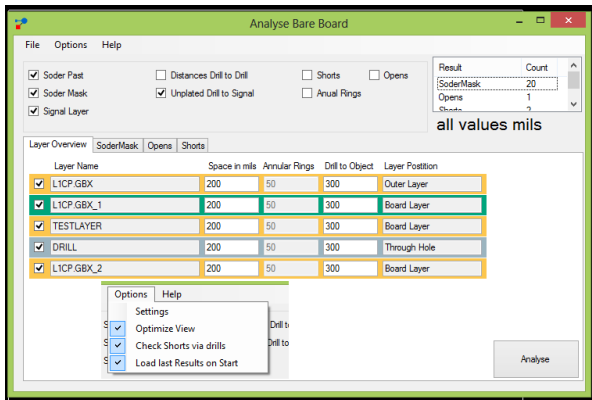
Tel: +49 941 604 889 719
Email: info@easyLogix.de
Web: www.easyLogix.de

New features



- Stubs (Lines and Arcs end in empty space)
- Mask to Signal distances (danger for shorts)
- Mask to Drill distances (danger for drilling through)
- Mask to SMD distances (danger for filling drill)

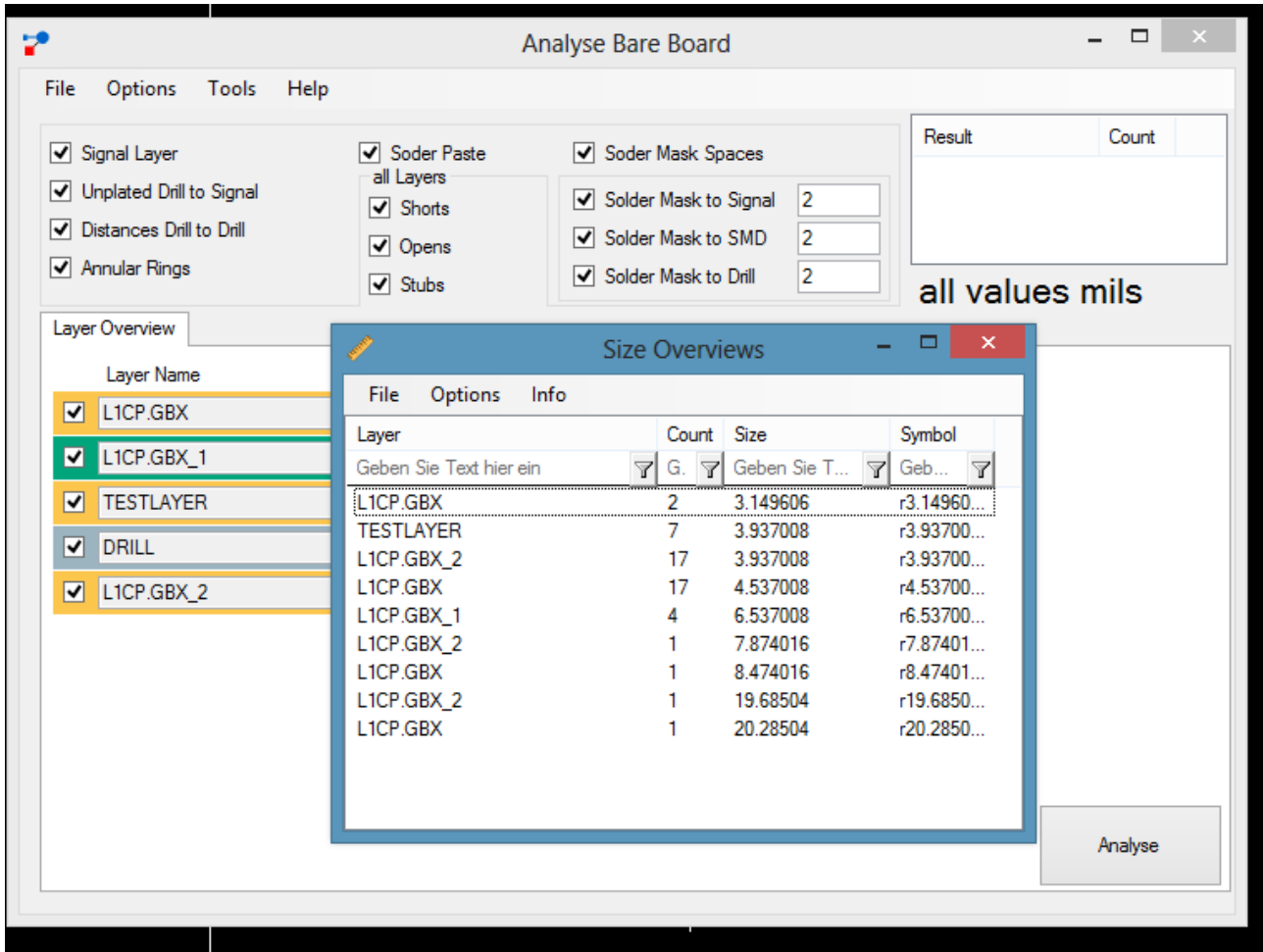
New features



Options:

- Multy Threading (much more speed)
- Connect Graphically Nets (reduce multy listing of nets)
- Ignor Negative Objects (not visible elements dos not interest)
- Only included by Profile (no info text and helperlines)

Size Overviews



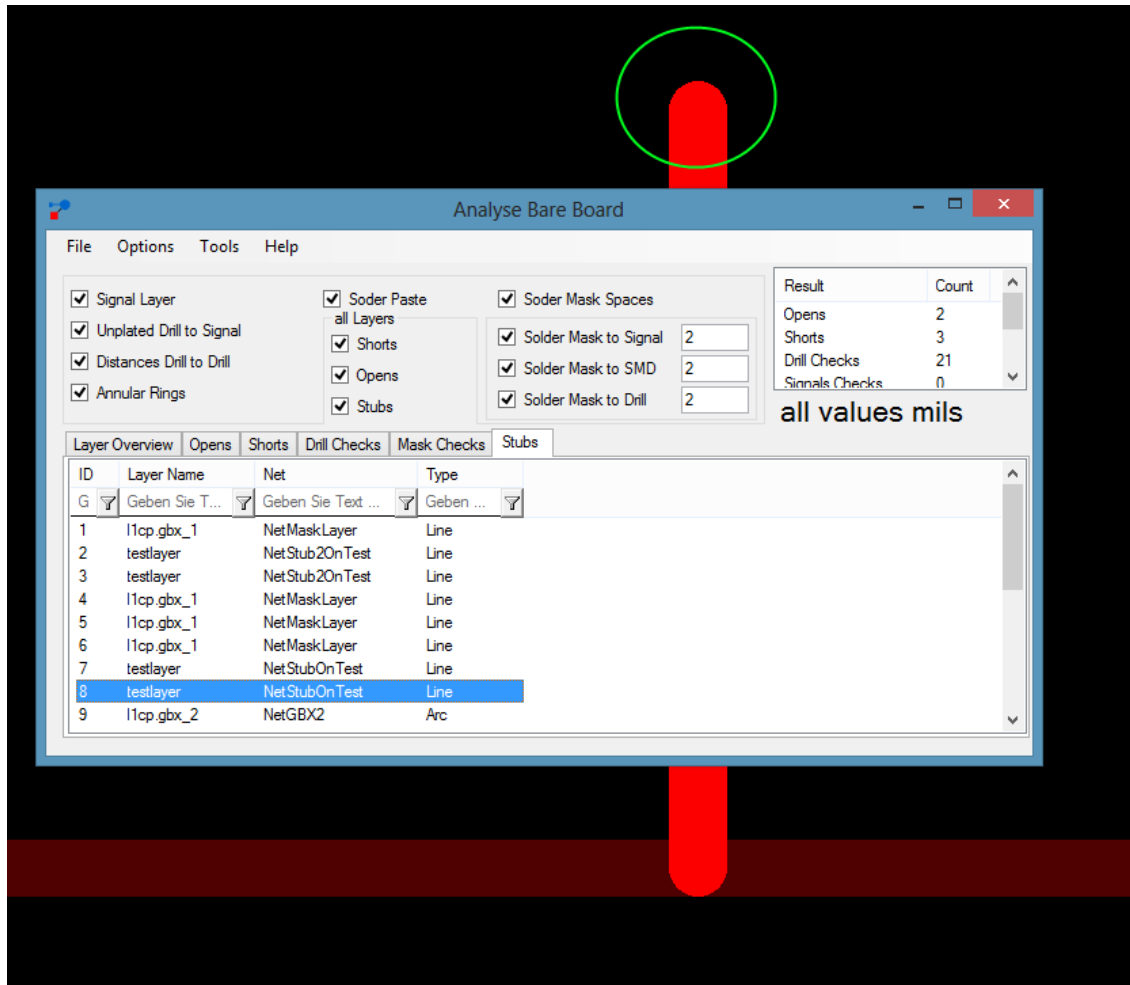
The screenshot shows the 'Analyse Bare Board' software interface. The main window has a menu bar (File, Options, Tools, Help) and a settings panel with various checkboxes for analysis options like 'Signal Layer', 'Unplated Drill to Signal', 'Distances Drill to Drill', 'Annular Rings', 'Soder Paste', 'Soder Mask Spaces', 'Solder Mask to Signal', 'Solder Mask to SMD', and 'Solder Mask to Drill'. A 'Layer Overview' section lists layers: L1CP.GBX, L1CP.GBX_1, TESTLAYER, DRILL, and L1CP.GBX_2. A 'Size Overviews' dialog box is open, displaying a table with columns for Layer, Count, Size, and Symbol. The table lists the following data:

Layer	Count	Size	Symbol
L1CP.GBX	2	3.149606	r3.14960...
TESTLAYER	7	3.937008	r3.93700...
L1CP.GBX_2	17	3.937008	r3.93700...
L1CP.GBX	17	4.537008	r4.53700...
L1CP.GBX_1	4	6.537008	r6.53700...
L1CP.GBX_2	1	7.874016	r7.87401...
L1CP.GBX	1	8.474016	r8.47401...
L1CP.GBX_2	1	19.68504	r19.6850...
L1CP.GBX	1	20.28504	r20.2850...

The dialog box also includes a search bar and an 'Analyse' button. The text 'all values mils' is visible below the dialog box.

Tool for overview Item sizes and counts. Helps to find smallest objects and design errors.

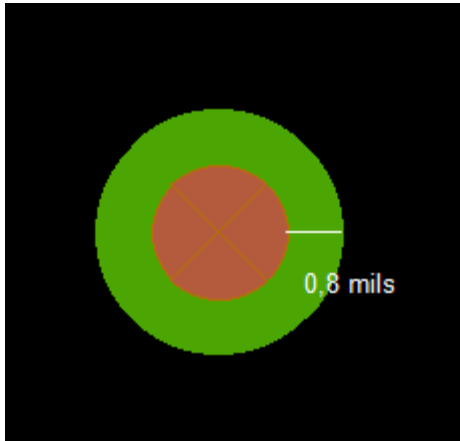
Stubs



Stubs are missing Pads on and net end.
The analyse checks for lines and arcs without overlapping element on the end.

Most design rules say there should be a Drill and a Pad at the end of a net (connection through layers or connection to component).

Solder Mask distances



Check for too less distance between solder mask and drill or SMD pads.

And to short distances between drills and solder mask elements.

You can also check distances on the solder mask or solder paste like on signal layers to find shorts or too small gaps.

