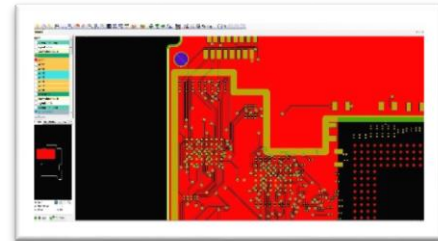
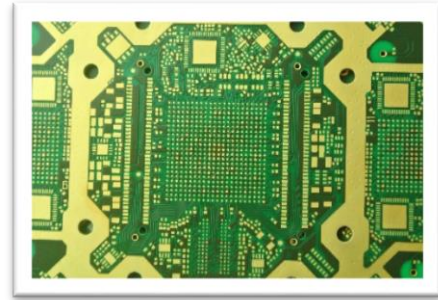




European Express production  
suitable for complex projects  
such as  
HDI PCB`s with  
50 microns line/space

questions ?  
call 0049-5522-124319

www.pcbexpress.eu  
call 0049-08912015333



## PCB Express GmbH

### PCB Investigator is an indispensable tool

PCB Express GmbH is sales office for PCBs committed to delivery of PCBs in express service and offers its extensive experience in complex printed circuit board production. PCB Express GmbH represents interests of exactly one European PCB manufacturer, who is ISO certified and very well equipped.

The company has one main goal: Customer satisfaction at every point of business relations. Security and reliability are in our focus. In order to achieve this goal, the PCB Investigator was chosen to ensure that the technical side of the process goes as smooth as possible for all parties included: customer, sales agents and manufacturer and assemblers.

Especially in the express-business minutes are counting, sometimes even seconds, to check the customer's data. It is not possible to transfer the ZIP-files from the customer to the fabrication hall without checking them first. Part of our extensive service is to analyze the data in our German offices immediately after sending RFQ or orders and to inform the customer about possible problems very fast. To overlook such problems or to ask the customer several days later, detected from the CAM-department in the fabrication hall, is too late in express service.

Also we cannot accept to use a software which is complicated to use or slow in response time or which is creating false alarms during analyzing the data.

Therefore it is very good and important to use the PCB Investigator which is easy to use and offers a lot of smart ideas to the user in order to optimize the daily life with Gerber data, RFQ and orders. Mr. Nissen : "I cannot imagine how the daily life working for PCB Express could be possible without the PCB Investigator".

Mr. Nissen, a freelance sales agent for PCB Express GmbH, was involved with Mr. Schindler (director of EasyLogix today) from the very beginning of the software that today evolved at PCB-Investigator.

On mutual satisfaction this relationship continues today.